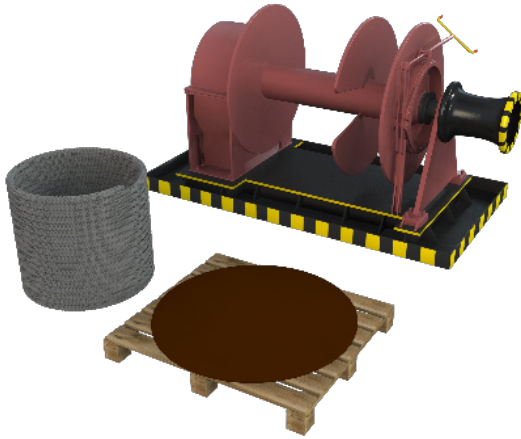
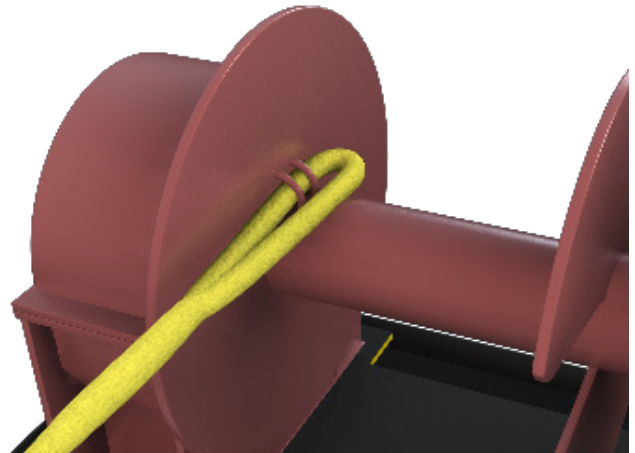


Timm™ Installation manual

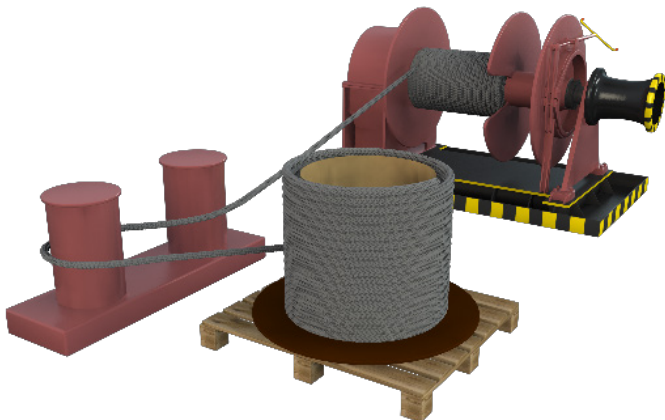
Split Drum



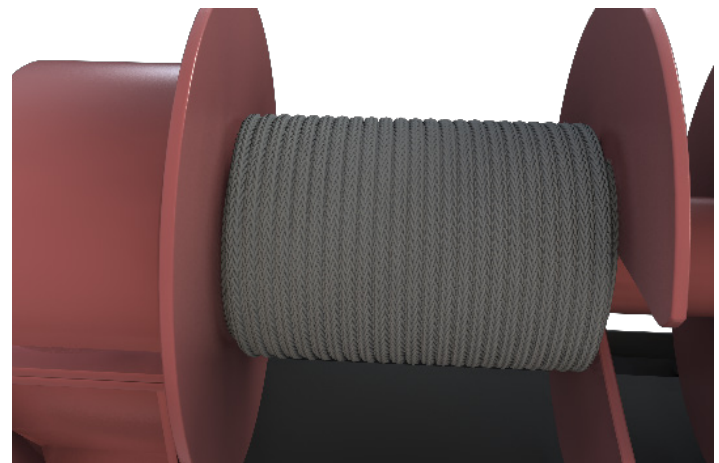
1. Prepare the required tools for installation, including a turntable and personal protective equipment.



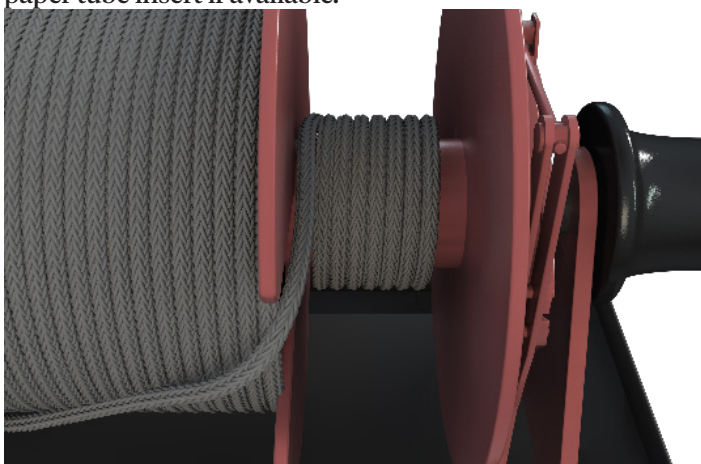
2. Attach the rope end securely to the drum of the winch



3. When winding, use deck hardware to keep back tension (> 40 kg). Ensure there is no twist on the rope. Use paper tube insert if available.

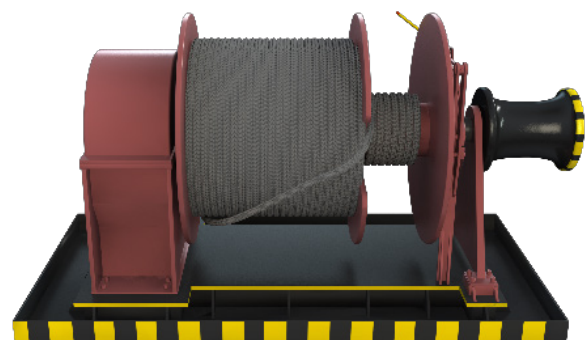


4. Building up layers evenly across the drum without gaps.



5. Use recommended min. amount of turns on the Tension drum.

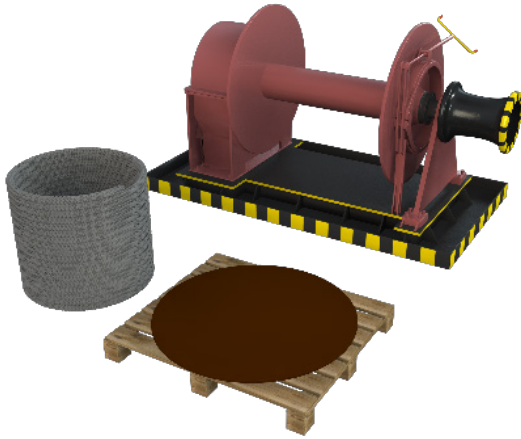
Conventional ropes **min. 5 turns**
HMPE ropes recommended **10 turns**



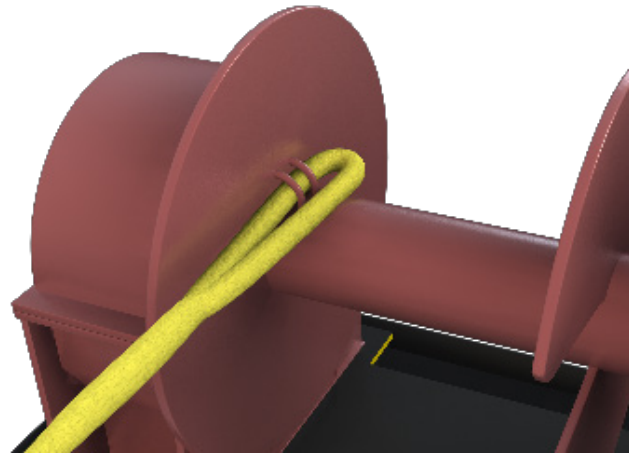
6. Finished installation

Timm™ Installation manual

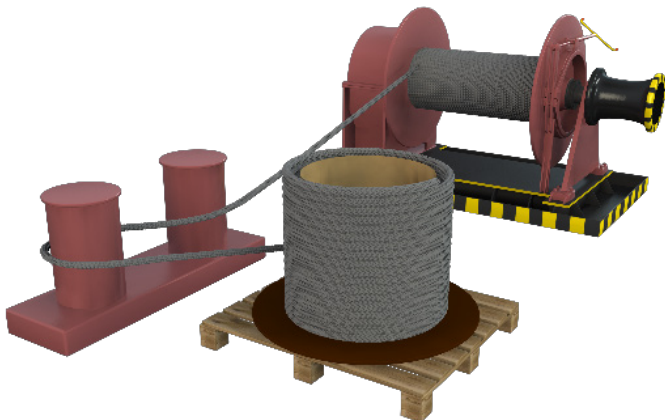
Single drum



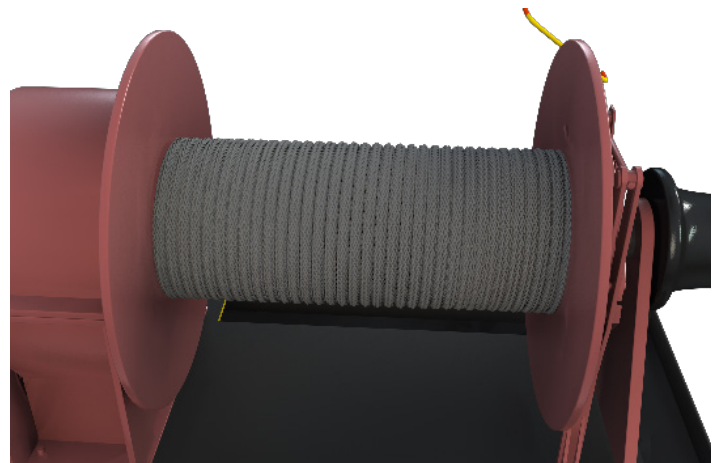
1. Prepare required tools for installation, including turntable and Personal Protective Equipment.



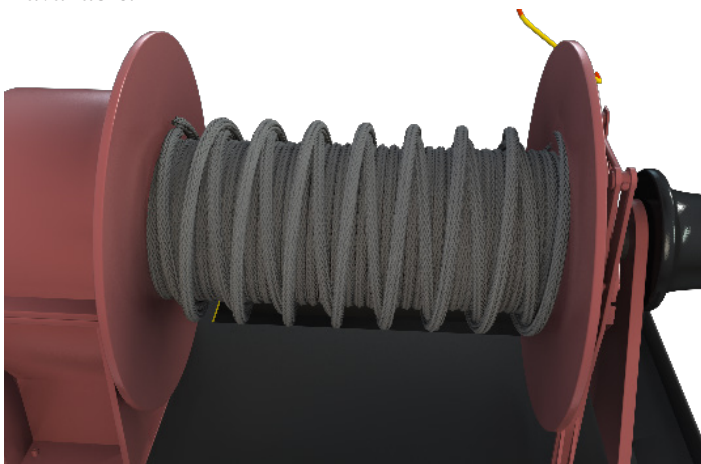
2. Attach the rope end securely to the drum of the winch



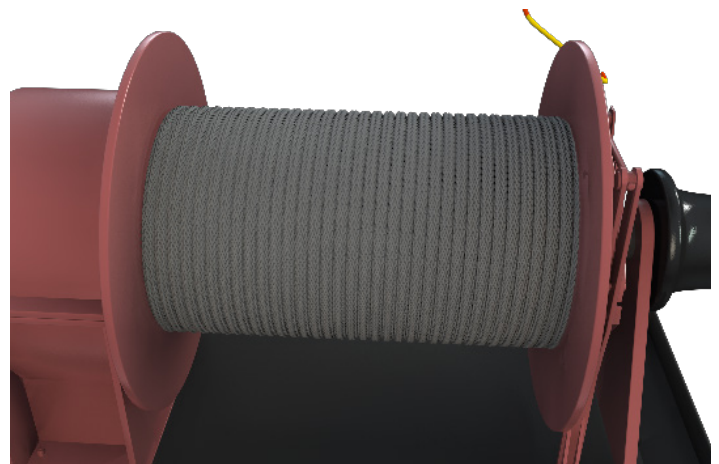
3. When winding, use deck hardware to keep back tension. Ensure there is no twist on the rope. Use paper tube insert if available.



4. Building up layers evenly across the drum without gaps.



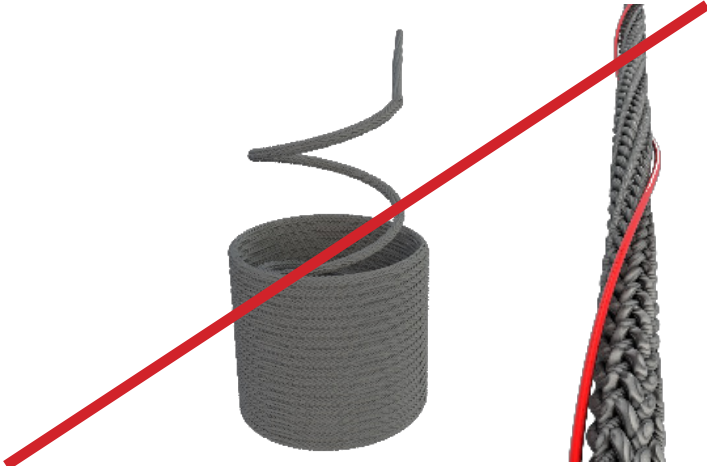
5. Combine even layers with cross winding to reduce the risk of burying the rope into the inner layers.



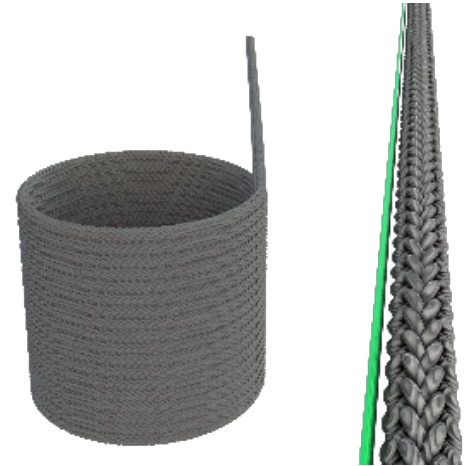
6. Finished installation

Timm™ Installation manual

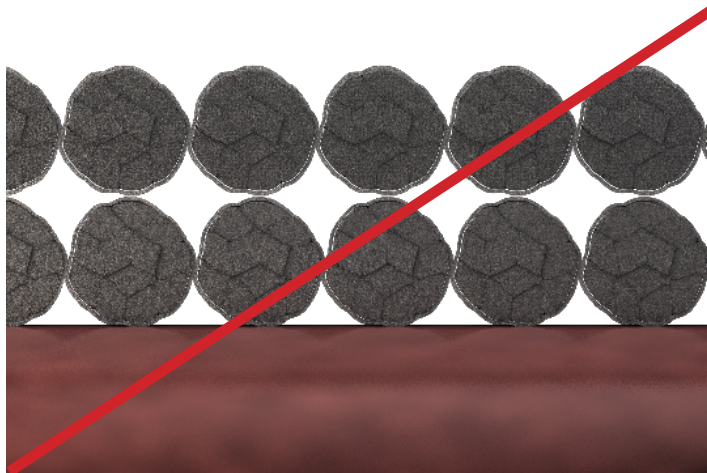
Dos & Don'ts



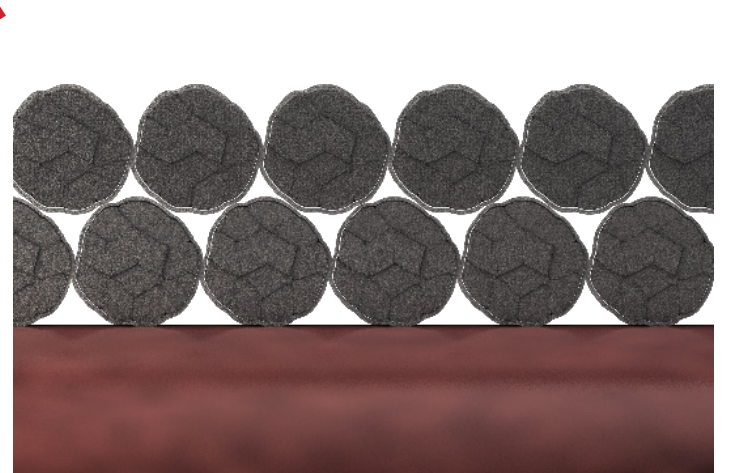
Avoid pulling rope from the center or outer side to prevent twisting the rope.



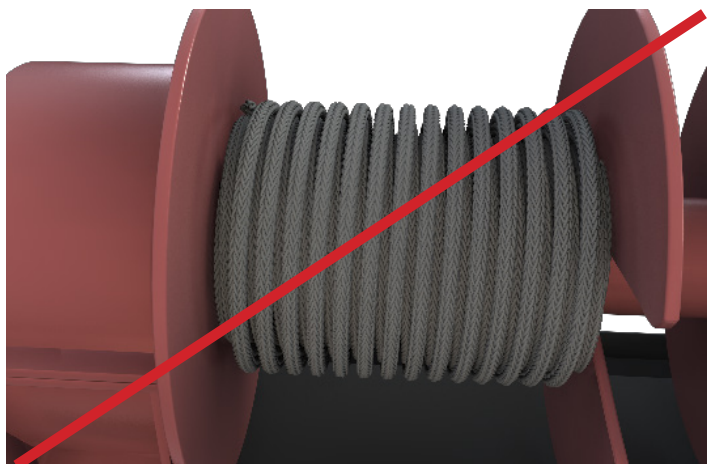
Unwind the rope from the outside by rotating the coil with the help of a turntable.



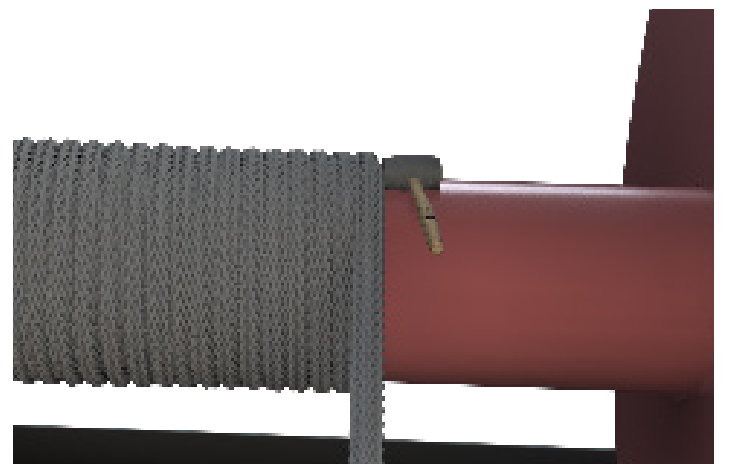
Layer the Rope Evenly to avoid creating space and potential movement of layers due to applied tension.



Properly aligned rope.



Avoid gaps in the layers.



Use a rubber or plastic hammer to tighten the layers.

For more information, check our [Installation Best Practices Manual](#).