

COURSE CATALOGUE

At International Maritime Training Centre (IMTC), our unwavering dedication is to offer comprehensive training solutions tailored to the exacting demands of the maritime industry. Our team of seasoned professionals is adept at delivering a diverse spectrum of courses and training programs, catering to the requirements of both onshore and onboard roles.



- **MANAGEMENT COURSES**
- **NAUTICAL AND CARGO COURSES**
- **ENGINEERING COURSES**
- **SKILL DEVELOPMENT CENTRE COURSES**
- **DG APPROVED COURSES**
- **WELDING COURSES**
- **INFORMATION TECHNOLOGY COURSES**

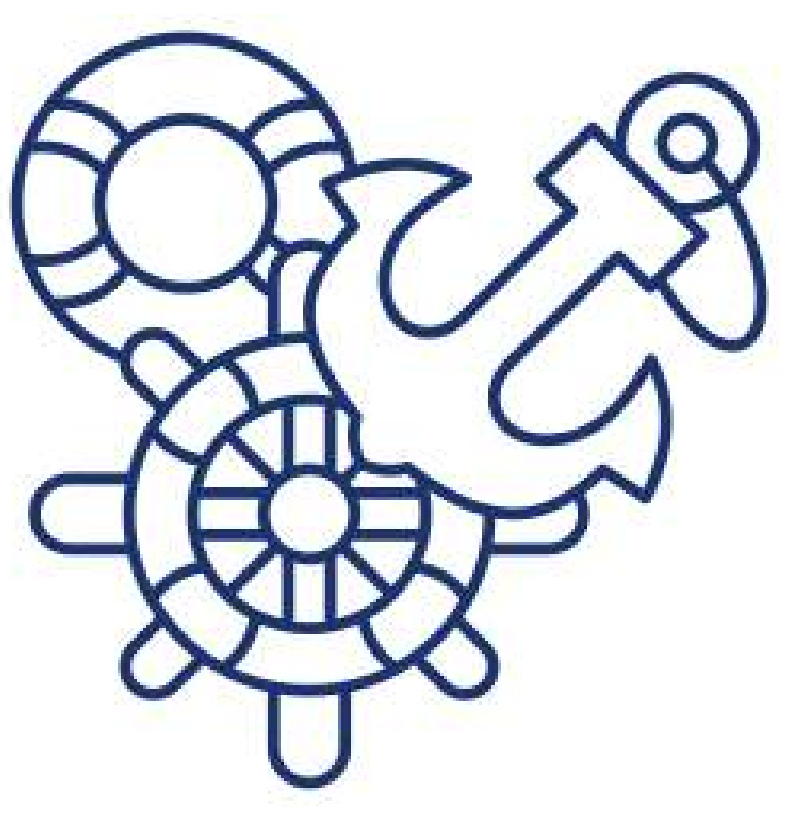


MANAGEMENT COURSES



- BRIDGE AND ENGINE ROOM RESOURCE MANAGEMENT COURSE (BERM)
- BRIDGE AND ENGINE-ROOM RESOURCE MANAGEMENT COURSE REFRESHER (BERM-REF)
- MARITIME RESOURCE MANAGEMENT SIMULATOR COURSE (MRM-SIM)
- MARITIME RESOURCE MANAGEMENT – REFRESHER (MRM - REF)
- MARINE ENVIRONMENT PROTECTION TRAINING - MARPOL / OPA 90 - IMO MODEL 1.38
- SAFETY MANAGEMENT SYSTEMS COURSE (SMGT)
- RISK MANAGEMENT & INCIDENT INVESTIGATION (RMII)
- TANKER VETTING COURSE (TVC)
- SHIPBOARD SAFETY OFFICER COURSE (SBSO)
- TRAINING FOR ONBOARD TRAINERS (TFOT)
- COMMERCIAL ASPECTS OF SHIP OPERATION (CASO)
- CROWD MANAGEMENT & HUMAN BEHAVIOUR CRISIS (CMGT)
- HAZARDOUS MATERIAL CARRIAGE COURSE (HAZA)





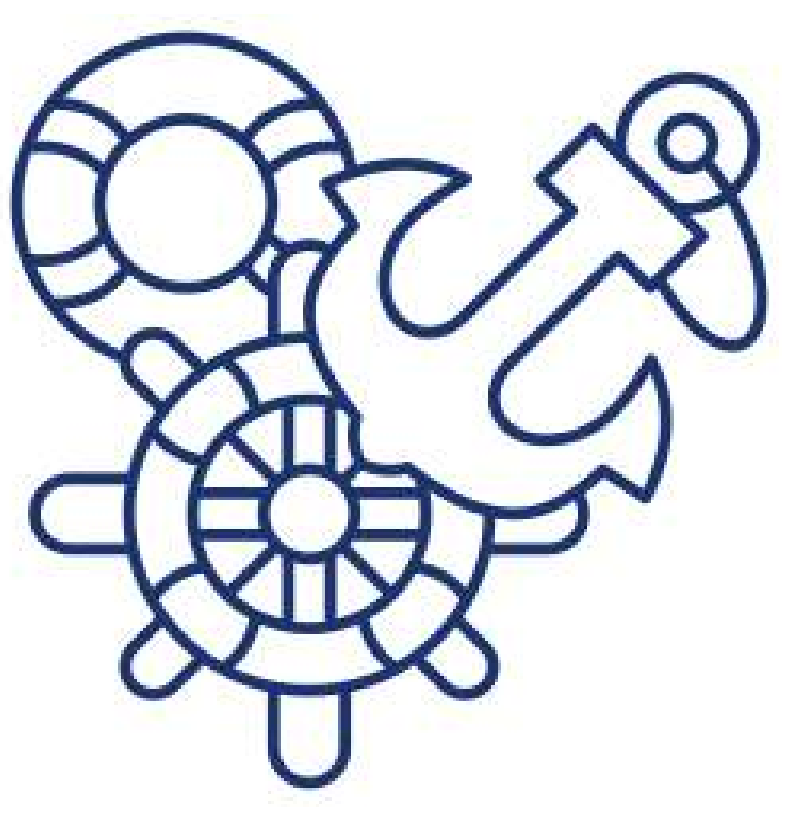
NAUTICAL & CARGO



- SHIP HANDLING SIMULATOR (SHS)
- BRIDGE TEAM AND RESOURCE MANAGEMENT (BTRM)
- ICE NAVIGATION IMO MODEL COURSE 7.11 (ICE-NAV)
- SIGGTO COMPLIANT LIQUIFIED CARGO HANDLING SIMULATOR – LNG TANKER
- EFFICIENT CARGO AND BALLAST HANDLING COURSE – LPG TANKER (LCHS) IMO MODEL 1.35
- EFFICIENT CARGO AND BALLAST HANDLING COURSE - OIL PRODUCT/CHEMICAL TANKER (LCHS) IMO MODEL 1.37
- EFFICIENT CARGO AND BALLAST HANDLING COURSE – CONVENTIONAL OIL TANKER (LCHS) IMO MODEL 2.06
- SIRE 2.0
- LNG BUNKERING SIMULATOR
- SAFE & EFFICIENT MANAGEMENT OF MOORING SYSTEM & EQUIPMENT (SMOC)
- ADVANCED TRAINING FOR SHIPS OPERATING IN POLAR WATERS IMO MODEL COURSE 7.12 (ADV-ICE)
- BULK CARRIERS SAFETY
- SHIP HANDLING SIMULATOR (SHS)

contd...



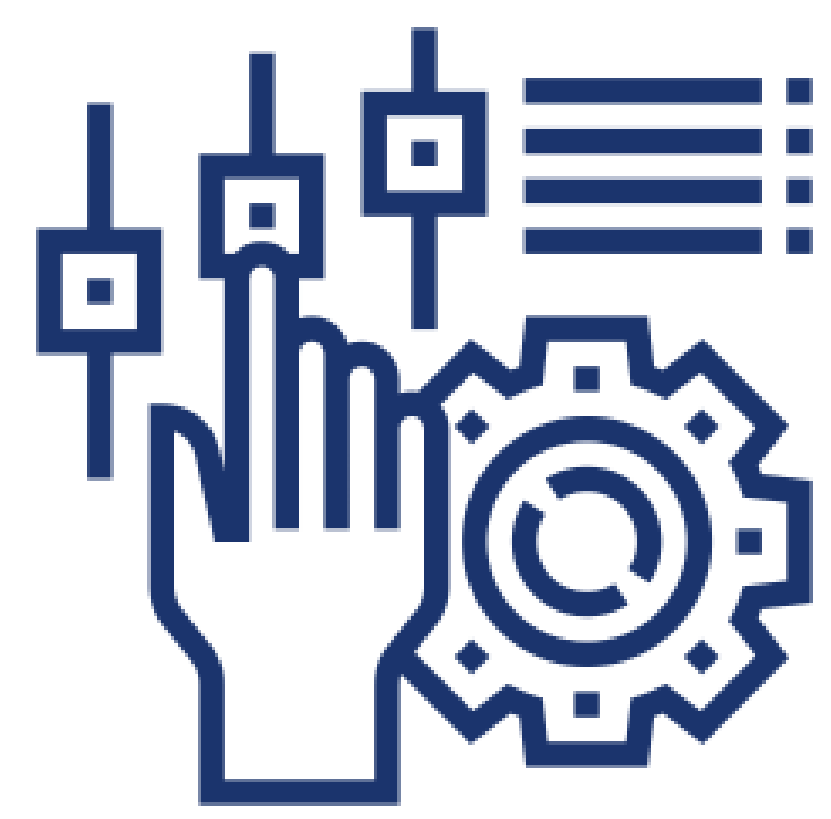


NAUTICAL & CARGO



- TYPE SPECIFIC ECDIS COURSES
- SHIP-TO-SHIP TRANSFER OPERATION(OIL TANKERS) (STS)
- PURE CAR / TRUCK CARRIER ORIENTATION COURSE (PCTC)





ENGINEERING COURSES



- **MEGI ENGINE – FAMILIARIZATION, OPERATION COURSE (MEGI)**
- **PRACTICAL MARINE ELECTRICAL WORKSHOP (PMEW)**
- **AUTOMATION & CONTROLS (AUTO)**
- **'FRAMO' HYDRAULIC CARGO PUMPING SYSTEM COURSE**
- **MARINE HYDRAULICS WORKSHOP (HYDR)**
- **MAN B&W – ME-C ELECTRONICALLY CONTROLLED MAIN-ENGINE COURSE**
- **MARINE ELECTRONICS**
- **COMPRESSOR MAINTENANCE COURSE (COMTS)**
- **HIGH VOLTAGE SAFETY COURSE (HVSC)**
- **PURIFIER MAINTENANCE COURSE (PMC)**
- **'NABCO' MAIN-ENGINE MANOEUVRING & CONTROL COURSE (NABC)**
- **ENGINE MACHINERY MAINTENANCE WORKSHOP (EMMW)**
- **ENGINE ROOM TEAM MANAGEMENT (ETM)**
- **APPLIED ELECTRONICS (AELC)**
- **EXPLOSION PROTECTION COURSE (ESPC)**





- **ENGINE MACHINERY MAINTENANCE WORKSHOP (EMMW)**
- **AUXILIARY ENGINE MAINTENANCE WORKSHOP (AEMW)**
- **CORROSION PROTECTION AND PAINT TECHNOLOGY COURSE (CPPT)**
- **PRACTICAL DECK SKILLS WORKSHOP (PDSW)**

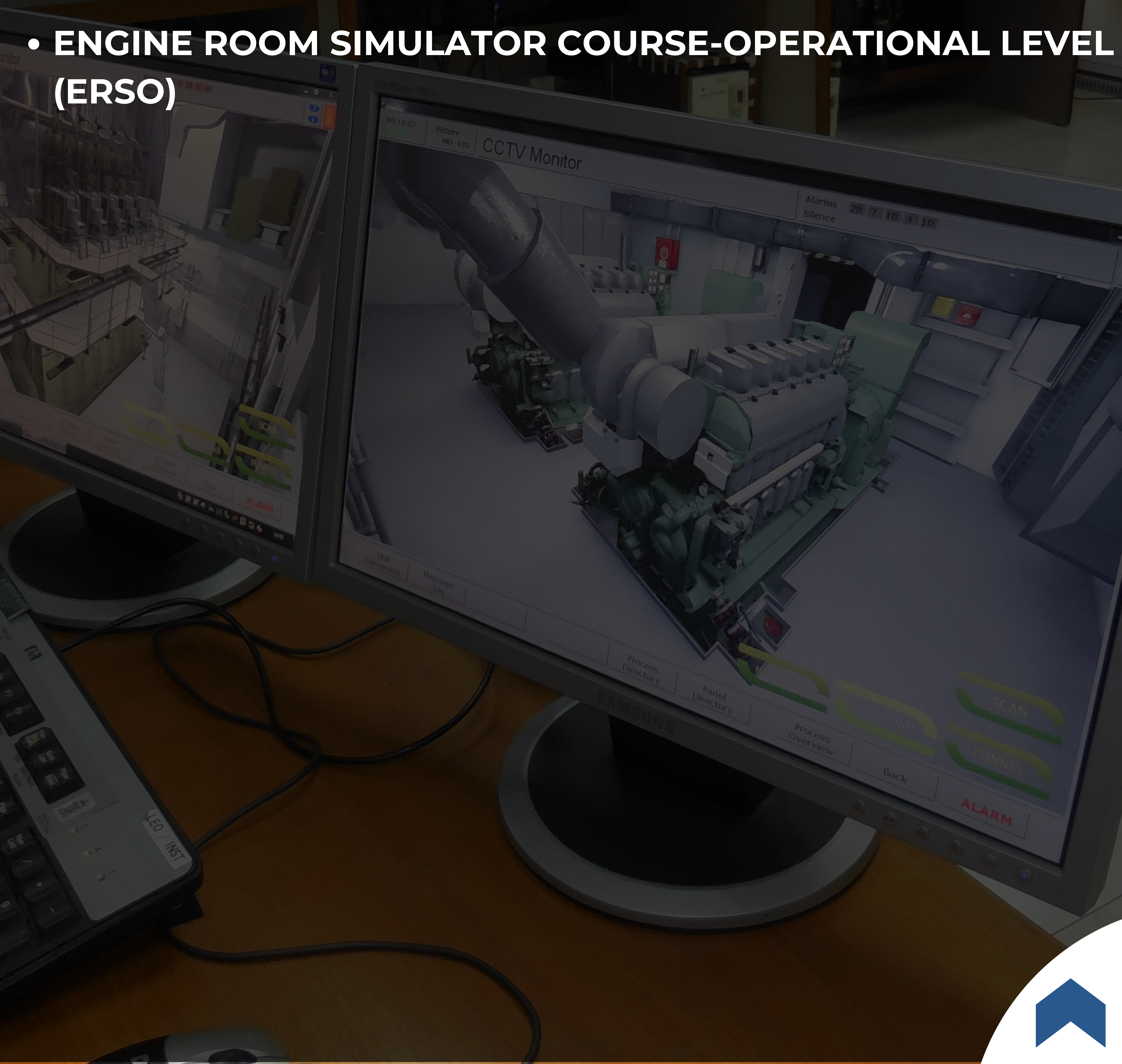


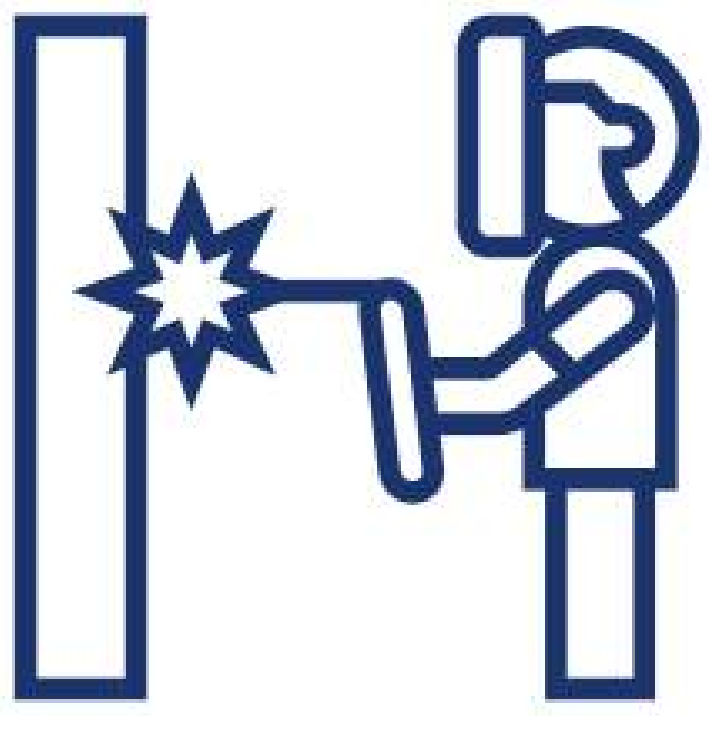


D.G. APPROVED COURSES



- **BASIC TRAINING FOR SHIPS USING FUEL COVERED WITHIN THE IGF CODE (IGFB)**
- **ADVANCED TRAINING FOR SHIPS USING FUEL COVERED WITHIN THE IGF CODE (IGFA)**
- **ENGINE ROOM SIMULATOR COURSE-OPERATIONAL LEVEL (ERSO)**





WELDING COURSES



- **GAS AND ARC WELDING FAMILIARISATION WORKSHOP (HTW1)**
- **ADVANCED GAS AND ARC WELDING WORKSHOP (HTW2)**
- **ADVANCED TIG WELDING WORKSHOP (HTW3)**
- **ADVANCED WELDING WORKSHOP FOR MARINE FITTERS (HTW4)**
- **ADVANCED GAS AND ARC WELDING PROGRAMME (HTW5)**





- **DOCMAP (D-MAP)**
- **BASSNET COURSE (BNET)**
- **COMPUTER HARDWARE, NETWORK MAINTENANCE & TROUBLESHOOTING (CHNT)**
- **TEOMAKI PLANNED MAINTENANCE SYSTEM**
- **STAR - INFORMATION & PLANNING SYSTEM (IPS) / AMOS (PMS)**

